

Metrics

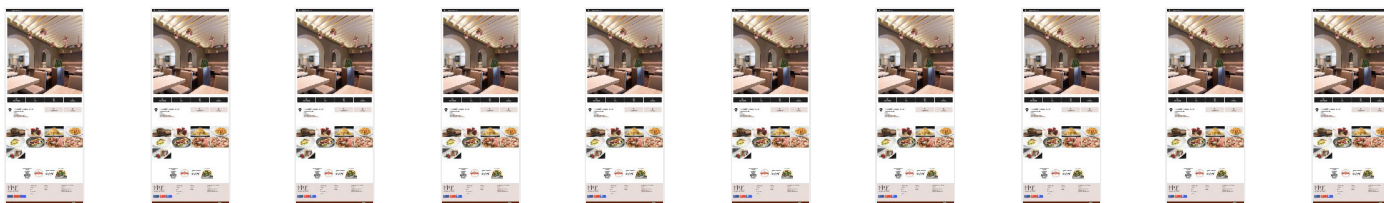


▲ First Contentful Paint	3.6 s	● Time to Interactive	3.6 s
■ Speed Index	3.6 s	● Total Blocking Time	0 ms
▲ Largest Contentful Paint	12.0 s	▲ Cumulative Layout Shift	0.339

Values are estimated and may vary. The [performance score is calculated](#) directly from these metrics. [See calculator.](#)

[View Original Trace](#)

[View Treemap](#)



Show audits relevant to: [All](#) [FCP](#) [LCP](#) [TBT](#) [CLS](#)

Opportunities — These suggestions can help your page load faster. They don't [directly affect](#) the Performance score.

Opportunity	Estimated Savings
▲ Serve images in next-gen formats	12.61 s
▲ Efficiently encode images	3 s
▲ Eliminate render-blocking resources	1.92 s
■ Reduce unused JavaScript	0.45 s
■ Properly size images	0.15 s

■ Minify JavaScript	■ 0.15 s	▼
■ Reduce unused CSS	■ 0.15 s	▼

Diagnostics — More information about the performance of your application. These numbers don't [directly affect](#) the Performance score.

▲ Serve static assets with an efficient cache policy	— 94 resources found	▼
▲ Ensure text remains visible during webfont load		▼
▲ Image elements do not have explicit width and height		▼
▲ Avoid enormous network payloads	— Total size was 4,970 KiB	▼
○ Avoid chaining critical requests	— 40 chains found	▼
○ Keep request counts low and transfer sizes small	— 120 requests • 4,970 KiB	▼
○ Largest Contentful Paint element	— 1 element found	▼
○ Avoid large layout shifts	— 5 elements found	▼
○ Avoid long main-thread tasks	— 2 long tasks found	▼

Passed audits (23) ▼



Best Practices

Trust and Safety

○ Ensure CSP is effective against XSS attacks	▼
---	---

User Experience

▲ Serves images with low resolution	▼
-------------------------------------	---

Passed audits (16) ▼

Not applicable (1) ▼



SEO

These checks ensure that your page is following basic search engine optimization advice. There are many additional factors Lighthouse does not score here that may affect your search ranking, including performance on [Core Web Vitals](#). [Learn more](#).

Content Best Practices — Format your HTML in a way that enables crawlers to better understand your app's content.

- ▲ Document does not have a meta description Description text is empty. ▼
- ▲ Image elements do not have `[alt]` attributes ▼

Mobile Friendly — Make sure your pages are mobile friendly so users don't have to pinch or zoom in order to read the content pages. [Learn more](#).

- Tap targets are not sized appropriately — 62% appropriately sized tap targets ▼

Additional items to manually check (1) — Run these additional validators on your site to check additional SEO best practices. ▼

Passed audits (10) ▼

Not applicable (1) ▼

Runtime Settings

URL	https://restavracija-mirje.si/
Fetch Time	Nov 14, 2021, 12:29 AM GMT+1
Device	Emulated Moto G4
Network throttling	150 ms TCP RTT, 1,638.4 Kbps throughput (Simulated)
CPU throttling	4x slowdown (Simulated)
Channel	devtools
User agent (host)	Mozilla/5.0 (Windows NT 10.0; Win64; x64) AppleWebKit/537.36 (KHTML, like Gecko) Chrome/95.0.4638.69 Safari/537.36
User agent (network)	Mozilla/5.0 (Linux; Android 7.0; Moto G (4)) AppleWebKit/537.36 (KHTML, like Gecko) Chrome/94.0.4590.2 Mobile Safari/537.36 Chrome-Lighthouse
CPU/Memory Power	2667
Axe version	4.2.3